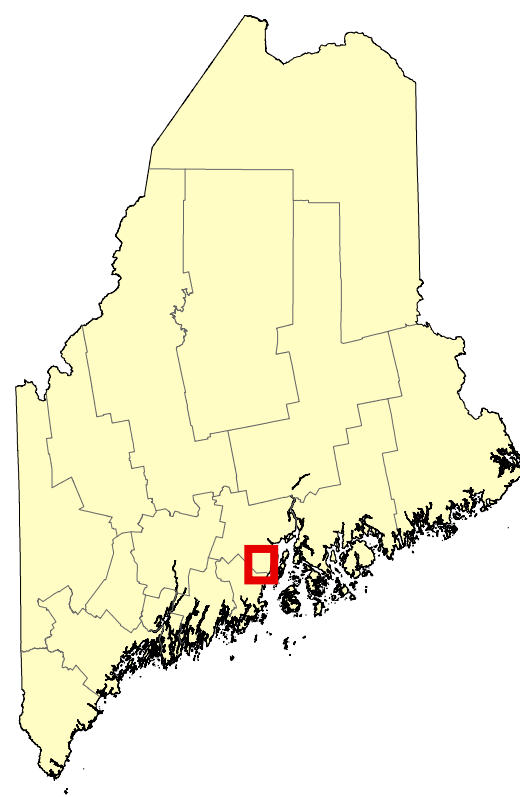


**Beginning with Habitat (BwH)**  
equips Maine communities, landowners, and  
conservation partners with tools to protect, restore, and  
connect important habitats and ecosystems in a changing  
climate.  
[www.beginningwithhabitat.org](http://www.beginningwithhabitat.org)

## High Value Plant & Animal Habitats Lincolnville

*This map is nonregulatory and is intended for planning purposes only*



**Town of Interest**

**Organized Towns**

**Developed** Impervious surfaces such as roads and buildings.

### Rare or Endangered Wildlife\*

**Endangered, Threatened, or Special Concern Species** Mapped observations of rare wildlife species.

### Rare or Exemplary Plants and Natural Communities

**Rare Plant Locations** Known rare, threatened, or endangered plant occurrences are based on field observations.

**Rare and Exemplary Natural Communities** Mapped features are based on field surveys and aerial photo interpretation.

### Significant Wildlife Habitat

**Significant Vernal Pools** Surveyed pool depressions used for breeding by amphibians and other indicator species and that portion of the critical terrestrial habitat within 250 ft of the spring or fall high water mark.

**Deer Wintering Area** Forested area possibly used by deer for shelter during periods of deep snow and cold temperatures.

**Inland Waterfowl and Wading Bird Habitats** Breeding, migrating/staging, or wintering areas for inland waterfowl or breeding, feeding, loafing, migrating, or roosting areas for wading birds.

**Tidal Waterfowl and Wading Bird Habitats** Breeding, migrating/staging, or wintering areas for coastal waterfowl or breeding, feeding, loafing, migrating, or roosting areas for coastal wading birds.

*\*Species and habitat labels are provided within and proximate to the town of interest.*

Contact the **Environmental Review** Team at the Maine Department of Inland Fisheries and Wildlife for information on fisheries, wildlife, and critical habitat resources related to potential development activities and regulatory processes. [IFWEnvironmentalreview@maine.gov](mailto:IFWEnvironmentalreview@maine.gov)

TOWN BOUNDARIES - ME Office of GIS (2021)  
HYDROLOGY - U.S. Geological Survey National Hydrography Dataset(2016)  
DEVELOPED - NOAA Coastal Change Analysis Program (C-CAP) (2022)

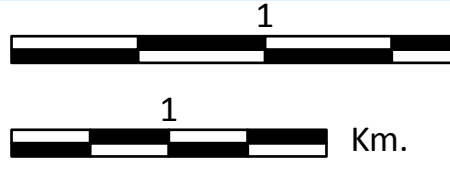
RARE, ESSENTIAL & SIGNIFICANT WILDLIFE HABITATS - ME Office of GIS, ME Dep. of Inland Fisheries & Wildlife (2024)  
RARE NATURAL COMMUNITIES & PLANTS - ME Natural Areas Pgm (2024)



Supported in part by  
Maine Outdoor Heritage Fund  
lottery ticket sales

Map Prepared by Maine  
Department of Inland  
Fisheries & Wildlife  
April 2025

Supported in part by  
Levon Conservation Plate funds



Mi.  
Scale: 1:24,000  
Projection: UTM 19N  
Datum: NAD 1983